



**Carn Brea Parish Council**

— Consel Plu Carn Bre —



**2025 Summer Newsletter**



# Annual Report 2025

A look back at a year with  
Carn Brea Parish Council



**Please ensure that you recycle this newsletter**

## **Carn Brea Parish Council:**

Carn Brea Parish Council operates at the most local level of Local Government with 17 Councillors elected for a term of four years. The last Council Elections took place in May 2025. The Councillors work for the Parish in a voluntary capacity and are supported by a team of paid employees headed by the Parish Clerk.

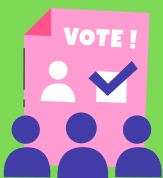
The Parish Council is always interested in the views of our local residents. Please feel free to contact us, via the Clerk, by telephone, by e-mail or by calling into the offices.

The Parish of Carn Brea lies between Redruth Town and Camborne Town and is made up by the areas of Pool, East Hill, Illogan Highway, West Tolgus, Barncoose, Carn Brea Village, Piece, Carnkie, Tregajorran, Treskillard, Four Lanes, Pencoys and part of Brea.

## **Membership of the Council:**

The Council consists of 17 Councillors and is made up of 4 Councillors in Barncoose Ward, 1 in East Hill Ward, 5 in Four Lanes Ward, 6 in Pool Ward and 1 in Tolgus Ward.

At the recent May elections there were 9 Councillors elected and the Council now has 8 vacancies which will be filled through the co-option process. Contact information for our Councillors can be found on notice boards within the Parish or on our website.



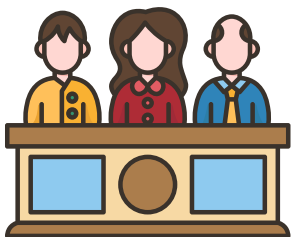
## **Electorate:**

The number of electors in the Parish as of 25th February 2025 is 6,910.

### **Council owned land:**

The Council owns approximately 22 acres of land including Wheal Fortune Park, Moorfield Road Open Space, Rock Field (Heath at Carn Brea Hill) and St Euny Well.

The Council has also signed an agreement with Cornwall Council for the management of the Trevithick Monument in Station Road and to maintain the piece of land at the Crossroads in Four Lanes.



### **Committee Meetings:**

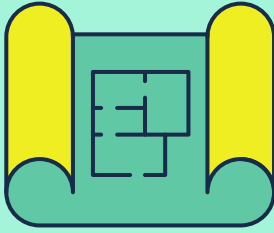
The Parish Council conducts its business through a committee system and all scheduled meetings generally start at 7pm. At all meetings the public are invited to attend and an opportunity is provided for

Registered Electors of the Parish to speak on agenda items, with the public speaking part of a meeting generally limited to 20 minutes. There may be times in a meeting where the business is conducted in private with the public and press excluded and the remainder of the meeting is for discussion by the Councillors only.

The Full Council meets monthly on the third Thursday of the month with the exception of December. The Planning Committee meets monthly on the last Thursday of the month, with the exception of December.

Other Committees meet less frequently, and these are the Amenities and Projects Committee, Health & Safety and Finance Committee, Staffing Committee and Open Spaces Committee.

Meetings do not take place during August, except for the Planning Committee. Agendas and Minutes are published on our Website:- [www.carnbreaparcouncil.gov.uk](http://www.carnbreaparcouncil.gov.uk)



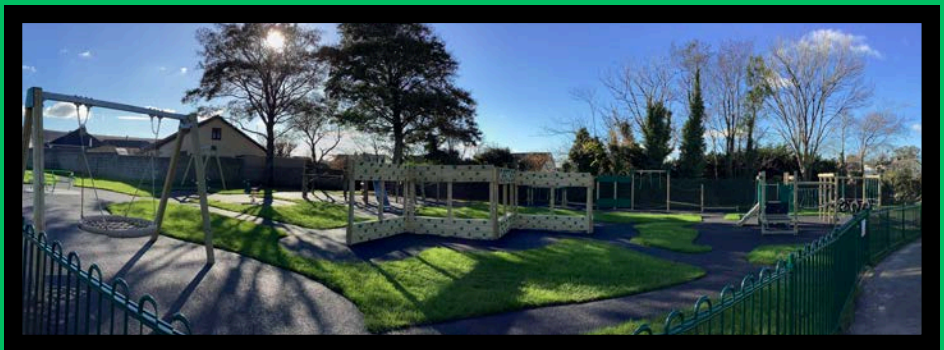
### **Planning Committee:**

Over the period January 2024 to December 2024 the Planning Committee considered a total of 71 applications in its role as statutory consultee on behalf of the Parish.

The committee supported 55 applications, supported 1 Planning Officers recommendation, opposed 13 applications, returned 1 requesting further information and made no comment on 1 application.

### **Wheal Fortune Play Park:**

In November 2024, the Council were delighted to open the New Play Park at Wheal Fortune Park which is now being enjoyed by all those that visit! Thank you all the local residents for their patience during the installation works.





Carn Brea Parish Council

Consel Plu Carn Bre

## Vision and Aims

We are committed to fulfilling our obligations and working on behalf of the residents and business on issues that matter.

- **Community:** The Council's vision is to provide a service to the Parish community through engagement, communication and activities that recognise and support local initiatives and will always strive to consult with residents on matters affecting their local areas.
- **Projects:** As part of the Council's commitment to improving amenities within the Parish and support with enhancing the local areas, the Council welcomes ideas and suggestions from residents on matters and issues concerning them and the local community for them to consider.
- **Parish Works:** Ensuring that our obligations are fully met to benefit the local communities is a priority for the Council. This includes the upkeep of assets within the Parish, regular litter picking and maintenance of our open spaces for the benefit of the community in addition to maintaining public paths and rights of ways within the Parish's designated area.
- **Governance and Training:** To ensure that Carn Brea Parish Council conducts its business in a proper manner and meets its legal obligations, the Council commits to providing ongoing training and supporting the development of its employees and Councillors to enable them to effectively carry out their responsibilities.



# LOOKING FORWARD

## **Council Precept for 2025–2026**

The Council's main source of income continues to be the precept, which has been set at £275,000 for the 2025–2026 financial year. This represents an 8.2% increase on the previous year, equating to an additional £7.84 for a Band D property – bringing the annual total to £103.71.

## **Plans for Treloweth Community Hall Improvements**

In 2025, the Council will be submitting a planning application to Cornwall Council for the improvement and extension of Treloweth Community Hall. These works are essential to future-proof the facilities used by the Parish Team.

The project will be primarily funded by reserves that have been specifically set aside, however, due to the rising costs of building materials and labour, the Council has also approved the application for a loan to ensure the project can be completed as planned.

## **Meeting Dates 2025-2026**

A full list of meeting dates can be found on our website and the monthly list of dates is published on our Facebook page.

## Carn Brea Parish Council - Balance Sheet as at 31<sup>st</sup> March 2025

31/3/2024	Current Assets	31/3/2025
3,086	VAT Control A/c	3,083
4,093	Prepayments	3,465
8,226	Lloyds Commercial Instant Access Account	9,639
14,177	Unity Current Account	21,650
228	Petty Cash	248
140,632	Lloyds Business Account	98,886
287,116	Unity Instant Access Account	176,544
86,491	NatWest Deposit Account	87,708
0	CCLA	100,000
<b>544,049</b>	<b>Total Assets</b>	<b>501,223</b>
	<b>Current Liabilities</b>	
6,140	Purchase Ledger Creditors	2,057
1,955	Accruals	2,640
317	Deposits	140
<b>8,412</b>	<b>Total Current Liabilities</b>	<b>4,837</b>
<b>535,637</b>	<b>Total Assets Less Current Liabilities</b>	<b>496,387</b>
105,657	Represented by General Reserves	151,091
429,980	Represented by Earmarked Reserbves	345,296
<b>535,637</b>		<b>496,387</b>

**Carn Brea Parish Council**  
**Income and Expenditure Account Year Ended 31<sup>st</sup> March 2025**

**31/3/2024**

**31/3/2025**

**Income**

220,000	Precept	250,000
18,232	Admin & Comm Costs	29,251
3,329	Treloweth Hall	3,146
3,230	Neighbourhood Plan	(350)

**244,791**

**Total Income**

**282,047**

**Running Costs**

139,743	Admin & Comm Costs	140,763
4,324	Newsletter	4,988
3,231	Events	1,664
425	Regeneration	0
17,006	Treloweth Hall	19,563
1,556	Vehicle	3,173
4,246	Devolution	0
48,860	Open Spaces	150,085
4,905	Neighbourhood Plan	1,061

**224,297**

**Total Expenditure**

**321,297**



**Carn Brea Parish Council Income and Expenditure  
Account Year Ended 31<sup>st</sup> March 2025 (Cont'd)**

**31/3/2024**

**31/3/2025**

**General Fund Analysis**

118,104

Opening Balance

105,657

244,791

Plus: Income for Year

282,047

---

362,896

---

387,704

224,297

Less: Expenditure for Year

321,297

---

138,599

---

66,407

32,942

Transfers To/From Reserves

(84,684)

---

**105,657**

**Closing Balance**

---

**151,091**



# Climate Emergency

## Taking Action on Climate Change

The Council has officially declared a Climate Emergency and is actively working to reduce its carbon footprint.

As part of these efforts, the Council prioritises supporting local businesses when reviewing contracts or making purchases, and encourages the use of recycled or sustainable materials when sourcing products and equipment.

The Council's IT project has significantly cut down paper use and printing expenses, with most Council information now being shared and stored electronically. Additionally, when renewing its electricity supplier, the Council ensures the energy comes from 100% renewable sources.

In a move to conserve water, new hanging baskets that require less watering were introduced. The original flower containers didn't go to waste though and they were repurposed and donated to Duchy College Rosewarne.



## **Carn Brea Parish Neighbourhood Development Plan (NDP).**

After many years of hard work, the Carn Brea Parish NDP went to a Public Referendum on 1<sup>st</sup> August 2024, and 87.95% voted in favour of the plan which is an excellent result! The Plan was officially ‘made’ by Cornwall Council and implemented on 16<sup>th</sup> September 2024 and is used to determine Planning Applications within the Parish.

### **New Bins**

To help encourage everyone to dispose of their litter responsibly, the Council have purchased and installed 3 new litter bins over the year on Grenifer Road, on the Corner of Chapel Terrace and Chariots Road and at South Wheal Francis Car Park.



### **Mobile Speed Detector**



Following feedback and requests for additional locations to be included for the Speed Indicator Sign the Council invested in a 2nd unit and an additional 5 locations have been added to the ongoing schedule for 2025. To date the Police have used the data provided by the Council to successfully target certain areas as part of their enforcement program.

# **TRELOWETH COMMUNITY HALL**

Need a Venue? Treloweth Community Hall is Available for Hire!

Looking for the perfect space for your next event, meeting, or activity? Treloweth Community Hall is available to hire on weekdays (excluding Thursdays) from 4 PM to 9 PM, and on Saturdays 9 AM to 9 PM. Need a different time? No problem—additional bookings may be available at the discretion of the Clerk's office. For full details, including our Hall Hire Policy, visit our website: [www.carnbreaparishcouncil.gov.uk](http://www.carnbreaparishcouncil.gov.uk)

To make a booking, please contact us at 01209 313014 or email [enquiries@carnbreaparishcouncil.gov.uk](mailto:enquiries@carnbreaparishcouncil.gov.uk).

## **PARISH NEWSLETTER, WEBITE AND FACEBOOK**

The Council strives to improve the dissemination of information to the local residents and the Parish Newsletter is a permanent quarterly publication which is delivered throughout the Parish and is also available on our website.

The website provides information on forthcoming events, Councillor information, contact details, agendas and minutes from meetings.

For day to day information - follow our Facebook page:  
[Facebook.com/CarnBreaParishCouncil](https://Facebook.com/CarnBreaParishCouncil)



# Community Defibrillators

Carn Brea Parish Council are delighted that as part of the ongoing project to provide Community Defibrillators within the Parish, defibrillators have now been installed with the help of Duchy Defibrillators at Taylors Tyres in Barncoose Lane, Illogan Highway and at The Grapevine Church in Lower Broad Lane, Illogan. These installations would not be possible without the support of the garage and the Church and a huge thank you to everyone who has supported the project. Carn Brea Parish Council have also taken over the existing Defibrillator Unit at Premier Stores in Pool and will now maintain this for the local community.

## Councillor Vacancies – Get Involved!

As of 6th May 2025, the Council had 8 Councillor vacancies that are to be filled through co-option.

If you're interested in making a difference in your community, we encourage you to get involved!

Please contact the Parish Clerk to check on current vacancies and request a co-option eligibility form along with an information pack.



# 2024 AWARDS



Congratulations  
Jenny Opie who was  
awarded the Clarence  
Coombe Award.

Thanks to the  
Chairman of the  
Council (Cllr. R. Drew)  
and Mrs. Coombe for  
presenting the award.



Congratulations  
Sophia Tame  
who was awarded the  
Marise Levenson  
Award. The award was  
presented by the  
Chairman of the  
Council (Cllr. R. Drew).

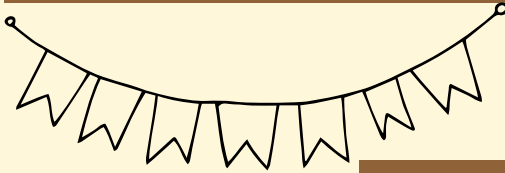




# 2024 AWARDS



Congratulations  
Sandra Merrifeild who  
was awarded the Carn  
Brea Parish Council  
Local Achievement  
Award. The award was  
presented by the  
Chairman of the  
Council (Cllr. R. Drew).



Congratulations  
Nick Lake who was  
awarded the Carn Brea  
Parish Council Local  
Achievement Award.

The award was  
presented by the  
Chairman of the  
Council (Cllr. R. Drew).



# Consultations:

In 2024 the Council were involved in the following consultations:

- Proposed Improvement works to the A3047
- Street Lighting Initiative
- The Interim Planning Policy Statement
- Off Street Parking Order 2025
- Waiting and Driving Restrictions
- Housing Decarbonisation Strategy
- Parish BT Public Phone Boxes
- Cornwall Council Gambling Policy
- Strengthening Standards & Conduct for Local Authorities
- Redruth Town Council Neighbourhood Plan

# Grant Aid:

Over the last year, grants totaling £2,616 were awarded by the Council:

- YMCA Cornwall £1000
- Gazelles Gymnastics Group £1,366
- Redruth Cricket Club £250

For the new financial year, the Council has increased it's Grant budget to £5000!

For more details on eligibility and how to apply, please take a look at the Councils Grant Policy available on the Website.



The Council Celebrated its 40th Anniversary at the Annual Parish Meeting held on 14<sup>th</sup> April 2025

and what better way to mark the occasion than by eating cake!.





## Carn Brea Parish Council Councillor Contact Details

Cllr:	Email:	Phone:
Bob Drew	cllr.r.drew@carnbreaparishcouncil.gov.uk	07854 925197
Shaun Dale	cllr.s.dale@carnbreaparishcouncil.gov.uk	07710 008036
Deidree Cooper	cllr.d.cooper@carnbreaparishcouncil.gov.uk	N/A
Ellie Glanville	cllr.e.glanville@carnbreaparishcouncil.gov.uk	07921 658352
Paul Holmes	N/A	01209 714275
Jean Pollock	N/A	01209 714275
Jane Poxon	cllr.j.poxon@carnbreaparishcouncil.gov.uk	N/A
Maureen Rainbird	cllr.m.rainbird@carnbreaparishcouncil.gov.uk	N/A
Alan Woodrow	N/A	01209 217506
John Paton	cllr.j.paton@carnbreaparishcouncil.gov.uk	N/A
Barrie Watkins	cllr.b.watkins@carnbreaparishcouncil.gov.uk	07873 222735

**Councillor Attendance 18/4/2024 - 27/3/2025**

<b>Councillor</b>	<b>Full Council</b>	<b>Staffing</b>	<b>Amenities &amp; Project</b>
D. Cooper	13/15	N/A	5/6
S. Dale	13/15	7/9	6/6
M. Davis	9/15	6/9	5/6
P. Deakin	8/10	N/A	N/A
R. Drew	15/15	9/9	6/6
E. Glanville	11/15	7/9	N/A
P. Holmes	14/15	N./A	5/6
M. Moyle	10/15	4/9	N/A
J. Paton	5/15	N/A	2/6
J. Pollock	14/15	N/A	5/6
J. Poxon	2/2	N/A	N/A
M. Rainbird	12/15	N/A	6/6
T. Salisbury	11/15	N/A	4/6
B. Watkins	11/15	N/A	5/6
A. Woodrow	12/15	N/A	N.A

## Councillor Attendance 18/4/2024 - 27/3/2025

Councillor	Health & Safety and Finance	Planning	Open Spaces Improvements
D. Cooper	5/5	11/12	5/6
S. Dale	5/5	11/12	0/6
M. Davis	N/A	N/A	N/A
P. Deakin	N/A	N/A	4/4
R. Drew	4/5	11/12	6/6
E. Glanville	N/A	N/A	0/1
P. Holmes	N/A	11/12	N/A
M. Moyle	N/A	5/12	4/6
J. Paton	N/A	1/12	N/A
J. Pollock	N/A	11/12	N/A
J. Poxon	N/A	N/A	N/A
M. Rainbird	2/5	9/12	2/6
T. Salisbury	4/5	6/12	N/A
B. Watkins	N/A	10/12	6/6
A. Woodrow	N/A	2/2	N/A

# ***Carn Brea Parish Council Employees***

<b>Job Title</b>	<b>Name:</b>	<b>Contact Details:</b>
Parish Clerk/RFO	Andrew Moyle-Browning	clerk@carnbreaparishcouncil.gov.uk 01209 313014
Assistant Clerk	Sarah-Jane Noakes	sarah-jane@carnbreaparishcouncil.gov.uk 01209 313014
Admin Assistant	Anita Hopkinson	admin@carnbreaparishcouncil.gov.uk 01209 313014
Grounds Person	Oliver Golden	01209 313014
Caretaker	Will Rogers	01209 313014
Covering Caretaker	Martyn Wright	01209 313014

## **CONTACT US**

 **01209 313014**

 **[enquiries@carnbreaparishcouncil.gov.uk](mailto:enquiries@carnbreaparishcouncil.gov.uk)**

 **[www.carnbreaparishcouncil.gov.uk](http://www.carnbreaparishcouncil.gov.uk)**



**Find us on Facebook**  
**[Facebook.com/CarnBreaParishCouncil](https://www.facebook.com/CarnBreaParishCouncil)**